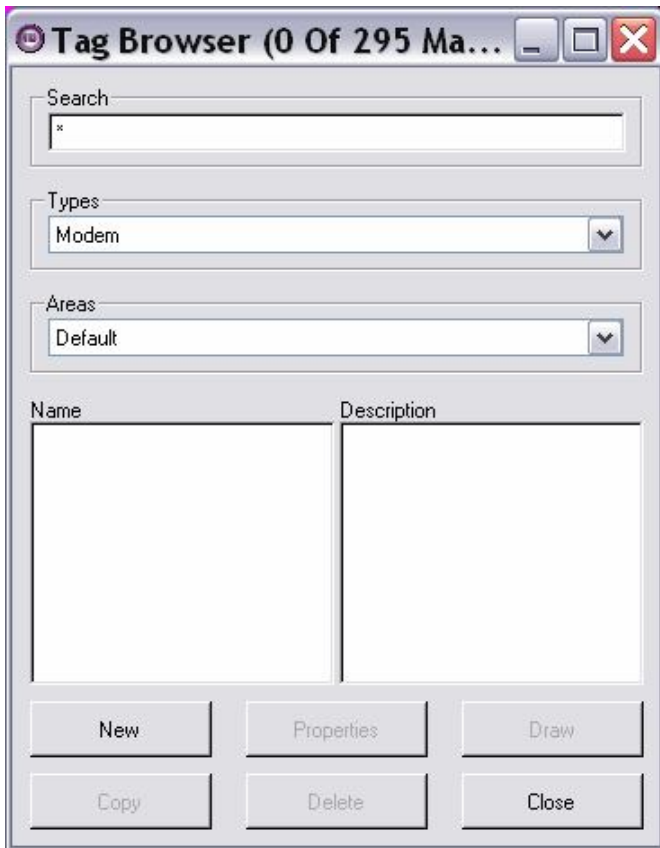




VTS Alarm Dialer Setup

Contents

- Configure a modem tag in VTS 1
- Create a Roster Tag 3
- Configuring Dialer Options 4
- Dialer Pronunciation Settings 5
- Realm Area Filtering 6
- For further information 6

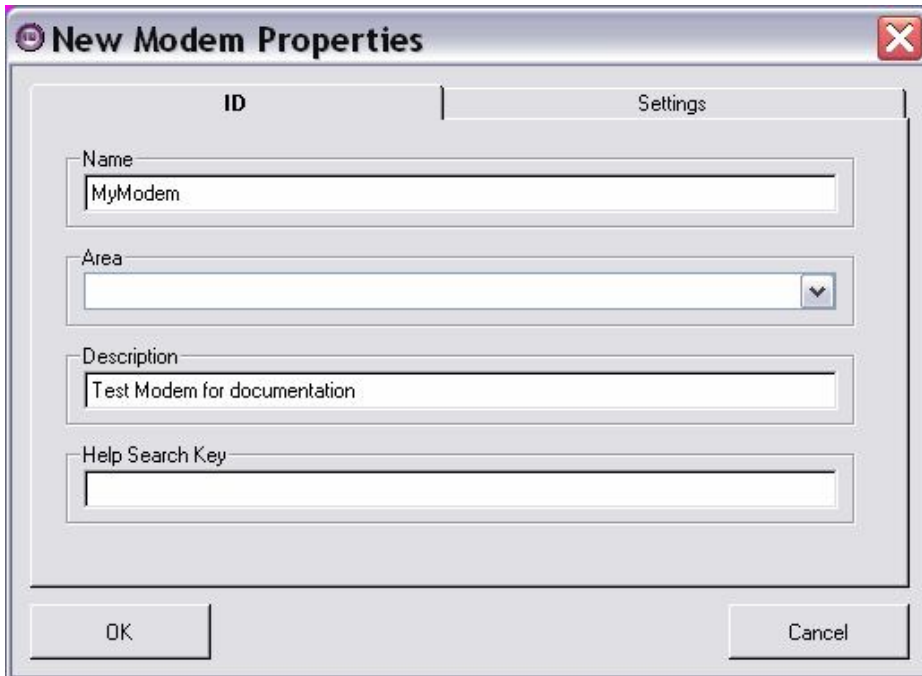


Configure a modem tag in VTS

Before setting up the VTS Alarm Dialer, there needs to be a voice modem installed on the computer.

In the Tag Browser select type 'Modem' from the drop-down list.

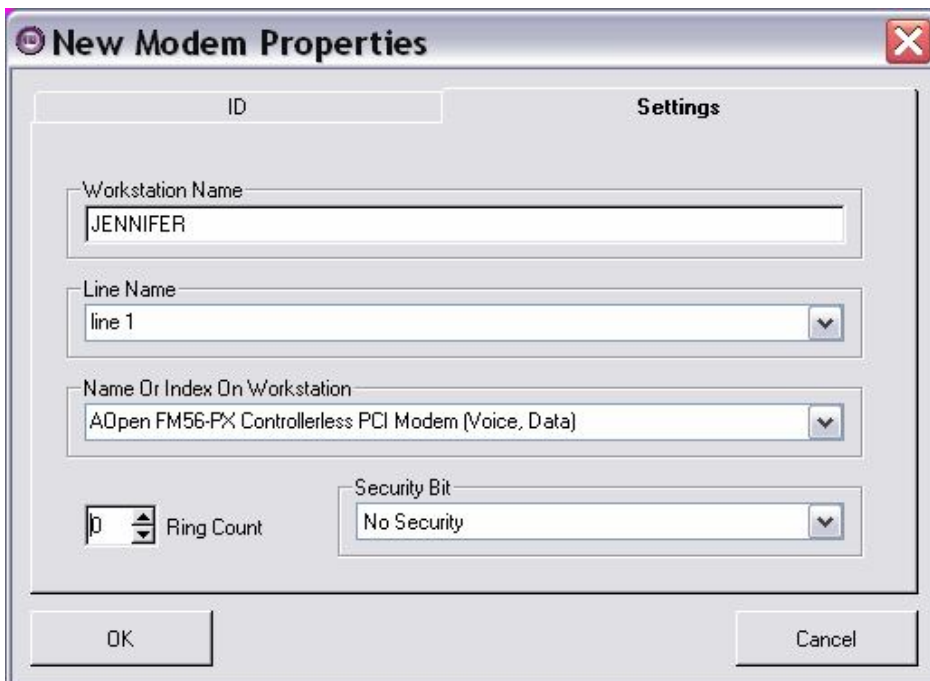
Select the 'New' Button.



Create a 'Name' for your modem and fill in the 'Description' field.

The 'Area' field should be left blank.

There are some instances where an area can be defined for a modem, but for the majority of applications this field should be left blank for proper operation.



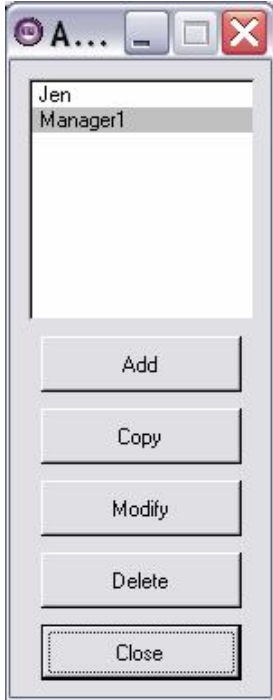
On the 'Settings' tab, enter the name of the workstation on which the modem is installed.

Create a line name (this name is arbitrary if using only one modem).

From the 'Name Or Index On Workstation' drop-down list, select the modem you are going to use (it should have 'voice' listed in its description).

Finally, if VTS is also going to accept incoming calls from operators on this modem then the ring count needs to be set to a non-zero number. Otherwise this can be left alone.

The 'Security Bit' can be left unchanged. Select 'OK'.



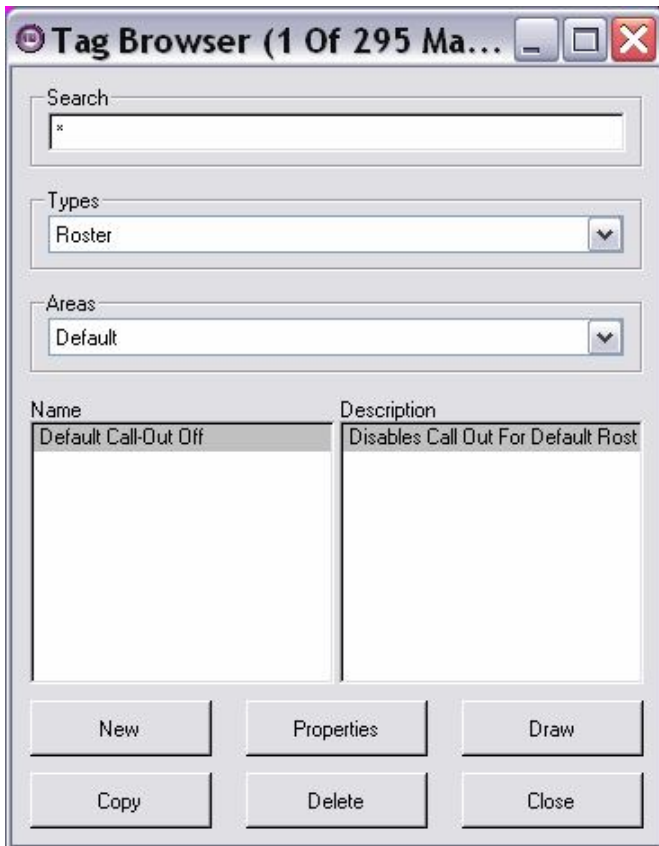
Create a Roster Tag

A 'Roster' tag is a list of users to call when an alarm event occurs.

The users in the roster must have a user id within VTS, not necessarily their own, with a unique alpha-numeric password configured. This will be the password required to log in on a call and is how the system will identify the user.

Each user can use the same log on if desired, but there must be at least one log on for them to use.

If using alphanumeric passwords the numeric keys are pressed only once to represent a letter (e.g. A '2' entered in the phone could represent either a '2', 'a', 'b', or 'c').

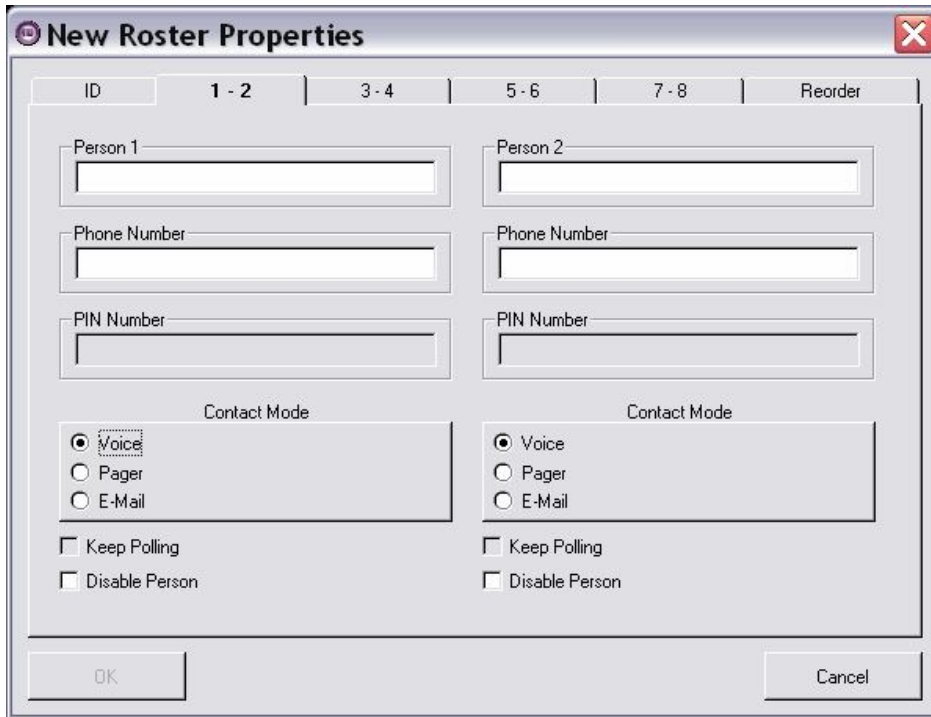


Back in the 'Tag Browser' select 'Roster' in the 'Types' field drop-down menu.

There should be a tag of this type already in the system by default (called "Default Call-Out Off").

This default tag will act as the 'off' button for your Alarm Dialer – it is a roster with no phone numbers to call out.

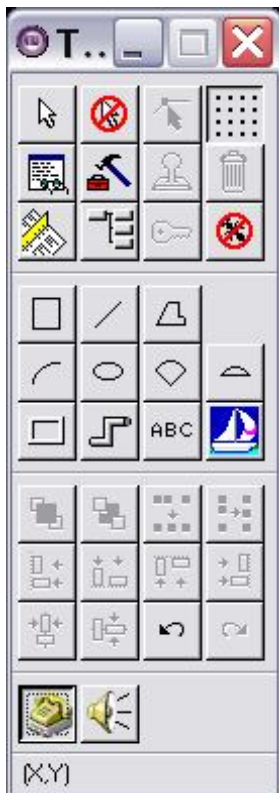
Select the 'New' button to create a new roster.



Fill in the 'Name' field and 'Description' if desired. The 'Area' can be left blank.

The following tabs are used to define the users in the roster. Each roster can have as many as 8 users defined. For each person enter a name and phone number.

Special calling configurations (such as needing to dial '9' to reach an outside line) can be configured through the Config.INI file (see section in help file). Select 'OK'.

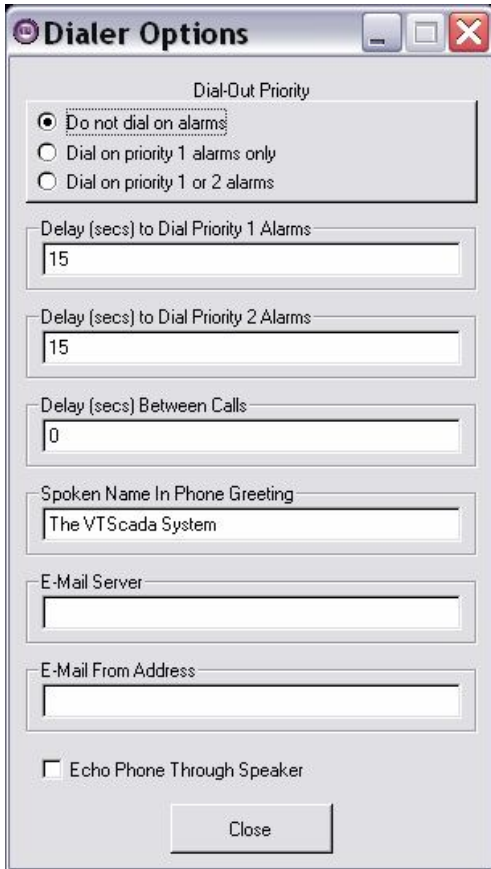


Configuring Dialer Options

Along the bottom of the configuration toolbar there are two separate icons: a phone and a speaker.

Selecting the phone will open up the 'Dialer Options' panel.

This is where the general dialer settings can be configured.

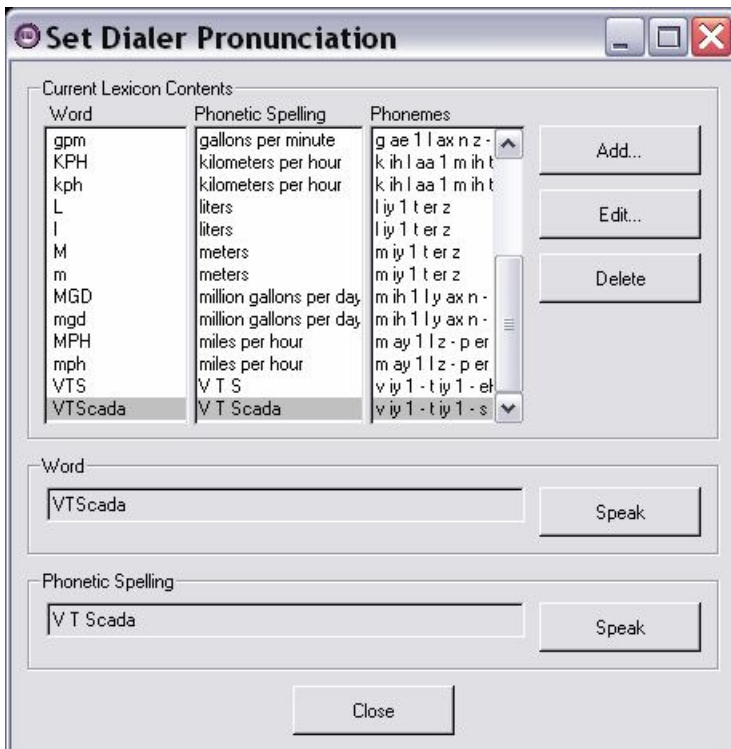


Most of the fields in this panel are self-explanatory, and the defaults will work.

The 'E-Mail Server' and 'E-Mail From Address' would only be used when configuring an Email alarm notification system. 'Echo Phone Through Speaker' will echo the voice being sent to the modem through the PC speakers. This can be helpful for troubleshooting purposes.

This is a configuration setting and the application needs to be restarted before any changes to this variable will take effect.

Pressing the 'F1' key while this panel is selected will open up the help file section describing these parameters in more detail.



Dialer Pronunciation Settings

Selecting the phone icon from the configuration toolbox will open the 'Dialer Pronunciation' panel.

If there are any words in an application which are being spoken incorrectly by the speech engine the pronunciation can be corrected here.

Realm Area Filtering

Note: You must set up realm area filtering in your application's Config.ini file if you wish to restrict some or all users from viewing and/or responding to alarms based on their 'Area'.

Information on setting up realm area filtering can be found in the VTS Programmer's Guide.

See:

- 11: Common Tasks: Filtering Application Data: Realm Area Filtering
- 12: Configuration Files and Variables: Introduction to Config.ini: Config.ini [REALMAREAS] Sections: Realm Area Filtering

For further information

Contact Trihedral Engineering at **800.463.2783** or email support@trihedral.com.