



Ensure your applications display correctly for end users with different monitor sizes and resolutions

Overview

When applications are created on large monitors at high resolutions there are often problems when these applications are installed in the field where monitors tend to be older and smaller. Here is a simple and effective way to help ensure that your application will display correctly in the field. In this example, the developer's screen resolution is 1680X1050 and the end user's screen is 1024X768.

Solution

1. Create a new VTScada application called UserScreen. (Fig 1)
2. Open the config.ini file located in the UserScreen application folder. (Fig 2)
3. Add the following settings then save and close the file. (Fig 3) In this case 1024x768 is the customer's monitor resolution.

```
[System]
Page = Overview
DispMgrHeight = 768
DispMgrWidth = 1024
```

4. When you create a new application, rather than selecting VTScada as the development layer, use this UserScreen application. The new application will inherit the display properties and start in a 1024 by 768 window.
5. Before moving the completed application to the final computer, open the GDI.wif file (also in the application directory) and change the second line from USERSCREEN\ to VTSCADA\.
6. Put the application folder in the VTS folder and restart VTS.
7. Use the Add New button to import the application and then run it.

The application will appear in full-screen and should be the right size for the screen.

More How-to Guides

www.trihedral.com/supportdocuments/howto

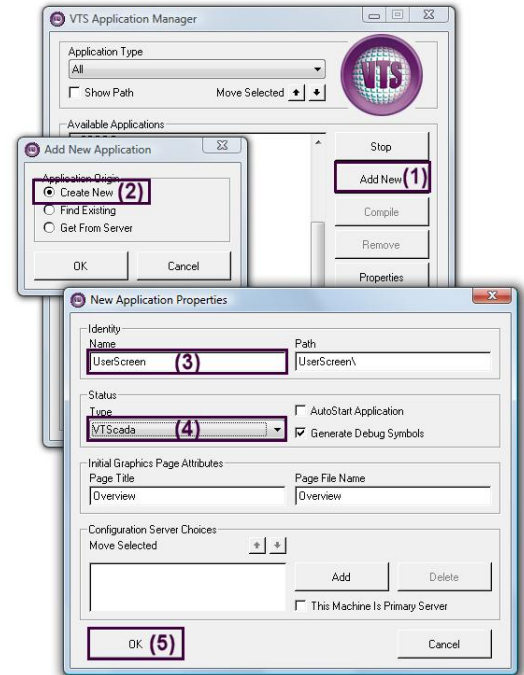


Figure 1

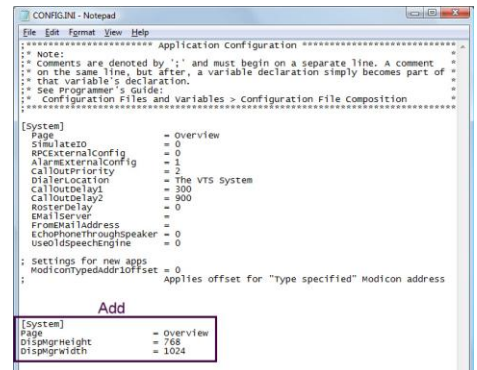


Figure 2

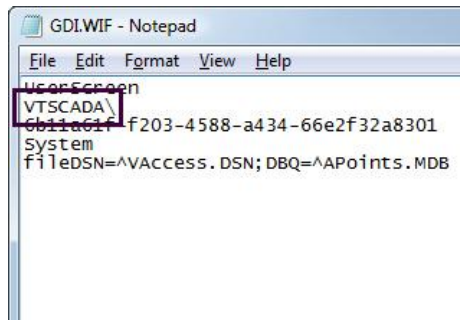


Figure 4

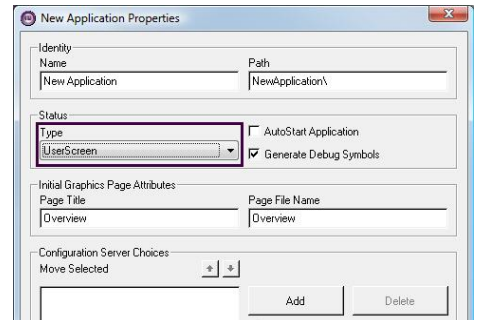


Figure 3